

Grandes Variations
pour LA GUITARRE seule
sur la Romance favorite

Partant pour la Syrie

COMPOSÉES et DEDIEES

A
Mademoiselle Anne Emmerich
par
Stano Gulian

Oeuvre 104



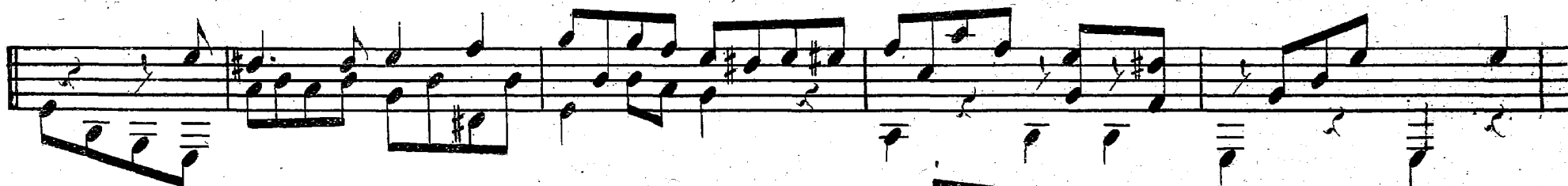
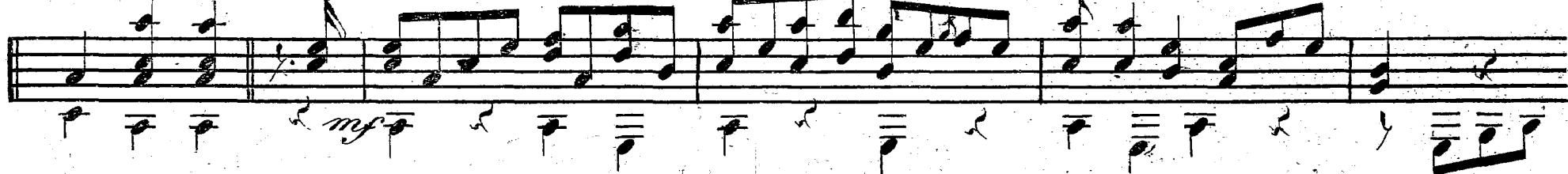
à Bonn chez N. P. M.

1994
611

*Allegro
maestoso.*



Thema.



Var. I.



Var. II.

Musical score for Variation II, featuring a treble and bass staff with various musical notations including dynamics (*mf*, *pp*), articulation (accents), and performance instructions (*cresc.*). The piece is in 3/4 time and consists of 12 measures. The treble staff contains a melodic line with eighth and sixteenth notes, while the bass staff provides a harmonic accompaniment with chords and single notes. The dynamics range from mezzo-forte (*mf*) to pianissimo (*pp*).

Var. III.
Andante
sostenuto.

Musical score for Variation III, featuring a treble and bass staff with musical notations including dynamics (*mf*) and performance instructions (*Andante sostenuto*). The piece is in 3/4 time and consists of 12 measures. The treble staff contains a melodic line with eighth and sixteenth notes, while the bass staff provides a harmonic accompaniment with chords and single notes. The dynamics range from mezzo-forte (*mf*).

This page of musical notation consists of ten staves of music. The notation is handwritten and includes various musical symbols such as notes, rests, and dynamic markings. The music is written in a single system across the staves. The dynamic markings include *f*, *mf*, *p*, *pp*, and *ppp*. The notation is complex, featuring many beamed notes and rests. The key signature has two sharps (F# and C#). The time signature is not explicitly shown but appears to be 4/4. The music is written in a single system across the staves. The dynamic markings are: *f* (first staff), *mf* (second staff), *f* (third staff), *f* (fourth staff), *f* (fifth staff), *f* (sixth staff), *f* (seventh staff), *p* (eighth staff), *pp* (ninth staff), and *ppp* (tenth staff). The notation is complex, featuring many beamed notes and rests. The key signature has two sharps (F# and C#). The time signature is not explicitly shown but appears to be 4/4. The music is written in a single system across the staves.

*Var. IV.
Con brio.*

mf.

cresc.

f

cresc.

First musical staff, featuring a treble clef and a key signature of one sharp (F#). The staff contains a series of eighth and sixteenth notes, some beamed together, with a melodic line that rises and then descends.

Second musical staff, continuing the melodic line from the first staff. It features similar rhythmic patterns and a key signature of one sharp.

Third musical staff, showing a continuation of the melodic and harmonic material. The notes are primarily eighth and sixteenth notes.

Fourth musical staff, featuring a more active melodic line with frequent sixteenth-note runs.

Fifth musical staff, continuing the melodic development with various rhythmic values.

Sixth musical staff, showing a continuation of the melodic line with some rests.

Seventh musical staff, featuring a melodic line with some beamed sixteenth notes.

Eighth musical staff, continuing the melodic line with various rhythmic patterns.

Ninth musical staff, featuring a melodic line with some rests and a dynamic marking of *f* (forte).

Ten musical staff, which is empty.