

2

1410 5/2

ALBION

Pour la Guitare

sur des motifs des  
Opéras nouveaux

de  
Vulci, Bellini, Campa & Herold.

DÉDIÉ à

Mademoiselle Emilie Weidmann

PAR

JOSEPH KÜFFNER



Paris Op. 70. Liv. 1.

N<sup>o</sup> 43579

Propriété des Rédacteurs

P. 30. 0.

Exécuteur aux Archives de l'Académie  
MAYENCE & ANVERS  
chez les fils de R. Schott.



Depot général de vente dans le Royaume  
à Leipzig chez M<sup>r</sup> Bartsch, à Brno chez Bratensky & Freywig

[1855]

*Allegro Risoluto* *Allegro Risoluto* par J. Kuffner Op. 970.

Introduzione

*Poco Allegro* *Allegro Risoluto*

*diminuendo* *pp* *cres.* *con. de*

*dolce* *cres. con. de* *diminuendo*

*Mancata* *p dolce*

*1.<sup>a</sup> Kar. 1.* *ritornello* *pp* *cres. con. de* *f*

*cres. con. de f* *Andante con moto dolce con espressione* *ritard.*

Musical score for a vocal piece, likely a chœur. The score consists of ten staves. The top staff is the vocal line with lyrics. The lower staves are piano accompaniment. The music features various dynamics and tempo changes. Key markings include *p*, *mf*, *ritardato*, *a Tempo*, *F. Spi*, *diminuendo*, *Stringendo il Tempo*, *piu a piu*, *crescen-do sempre*, *poco a poco*, *Fiance Chœur des Voleurs*, *crescen-do*, and *pp*.

*Andante con moto*

*Dolce*

First staff of music. Treble clef, 2/4 time signature. Dynamics include *p*, *pp*, and *crescendo*. The melody is in a major key and features a series of eighth and sixteenth notes.

Second staff of music. Treble clef. Dynamics include *pp* and *mf*. The accompaniment consists of chords and moving bass lines.

*Finis. 3. Pas. 3. Pas*

Third staff of music. Treble clef. Dynamics include *pp*. The melody continues with eighth notes.

Fourth staff of music. Treble clef. Dynamics include *pp*. The accompaniment features chords and moving bass lines.

Fifth staff of music. Treble clef. Dynamics include *pp*. The melody continues with eighth notes.

Sixth staff of music. Treble clef. Dynamics include *pp*. The accompaniment features chords and moving bass lines.

*Allegretto*

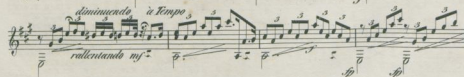
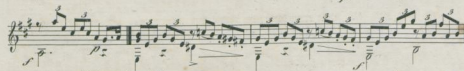
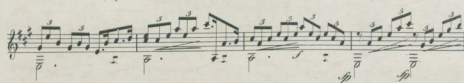
Seventh staff of music. Treble clef. Dynamics include *pp*. The tempo changes to *Allegretto*. The melody continues with eighth notes.

Eighth staff of music. Treble clef. Dynamics include *pp*. The accompaniment features chords and moving bass lines.

Ninth staff of music. Treble clef. Dynamics include *pp*. The melody continues with eighth notes.

Tenth staff of music. Treble clef. Dynamics include *pp*. The accompaniment features chords and moving bass lines.



*Andante con moto*

7

dimin. à Tempo  
rallent

pp

pp

pp

pp

pp

pp

pp

cres. ... cen. do poco a poco 6 8 per 6 8 per 6 8 per 6 8 per

Fine.