



29

Les
Folies d'Espagne

variées de deux Manières

pour la

Guitare

par

F. Carulli.

Oeuw. 75.

à Leipsic

Pr. 8 Gr.

Chez Breitkopf & Härtel.

4 Kreis. pr. 2011. 2705

2

Andante

Var. 1.

63

Var. 2.

Var. 3.

**) On peut exécuter la 4^{ème} Var. avec ces Arpeges.*



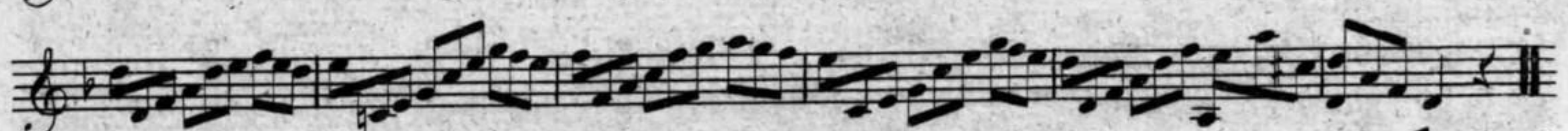
Cette 3^{me} Var. peut s'exécuter avec les Arpeges suivants.



Var. 4.



Var. 5.



Var. 6.



Var. 7. 

Var. 8. 

Var. 9. 

Var. 10. 

pouce barré

Two staves of musical notation. The first staff begins with a treble clef, a key signature of one flat (B-flat), and a 3/4 time signature. The music consists of a continuous sequence of eighth and sixteenth notes, creating a dense, rhythmic texture.

Var. 11.

Five staves of musical notation for Variation 11. The notation is in treble clef, one flat key signature, and 3/4 time. It continues the complex rhythmic pattern of eighth and sixteenth notes, with some notes beamed together in groups.

Var. 12.

Seven staves of musical notation for Variation 12. The notation is in treble clef, one flat key signature, and 3/4 time. It features a complex rhythmic pattern of eighth and sixteenth notes, with some notes beamed together in groups.

Two staves of musical notation for the final variation. The first staff begins with a treble clef, one flat key signature, and a 3/4 time signature. It includes a section marked with an asterisk (*). The second staff continues the notation, with a change in time signature to 3/4.

*) On peut exécuter cette dernière Variation avec ces Arpegges.

Les Folies d'Espagne

Andante sostenuto.

Var. 1.

Var. 2.

Var. 3

Musical notation for Variation 3, consisting of four staves of music in G major and 3/4 time.

Var. 4

Musical notation for Variation 4, consisting of three staves of music in G major and 3/4 time.

Var. 5

Musical notation for Variation 5, consisting of seven staves of music in G major and 3/4 time, with vocal line lyrics.

sur la chanterelle — — — — — *sur le si*
sur le sol
sur la chanterelle *sur le re* — — — — —
sur le si — — — — —



Var. 6.

Musical score for 'Var. 6' in G major, 3/4 time. The score consists of ten staves of treble clef notation. The key signature is one sharp (F#) and the time signature is 3/4. The music features a complex rhythmic pattern with many slurs and accents. Fingerings are indicated throughout, including 2 4, 1, 4 1 3, 2, 1 1, 3 2 4, and 1. The piece ends with a double bar line and the word 'Fine' written below the final staff.